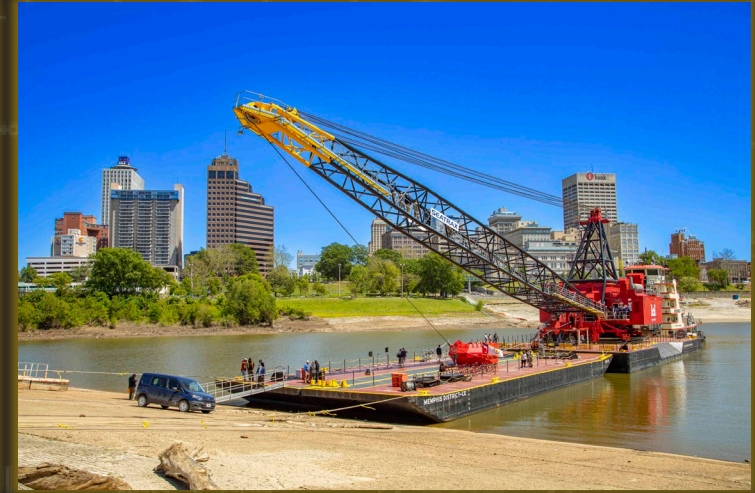


U.S. ARMY CORPS OF ENGINEERS MEMPHIS DISTRICT

2025 Mississippi Valley Division
Regional Industry Day
February 19th, 2025

Sherrie Cordi
Deputy, USACE MVM OSBP



U.S. ARMY



US Army Corps
of Engineers®





U.S. ARMY



2

MEMPHIS DISTRICT:

WHO WE ARE,

WHERE WE ARE,

AND

WHAT WE DO



U.S. ARMY

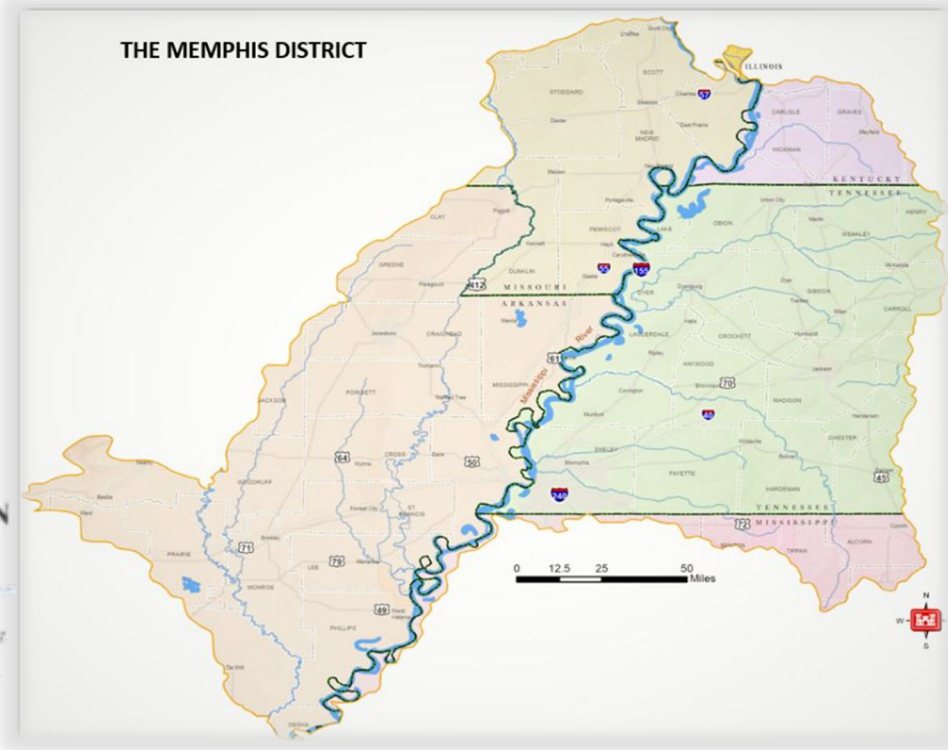
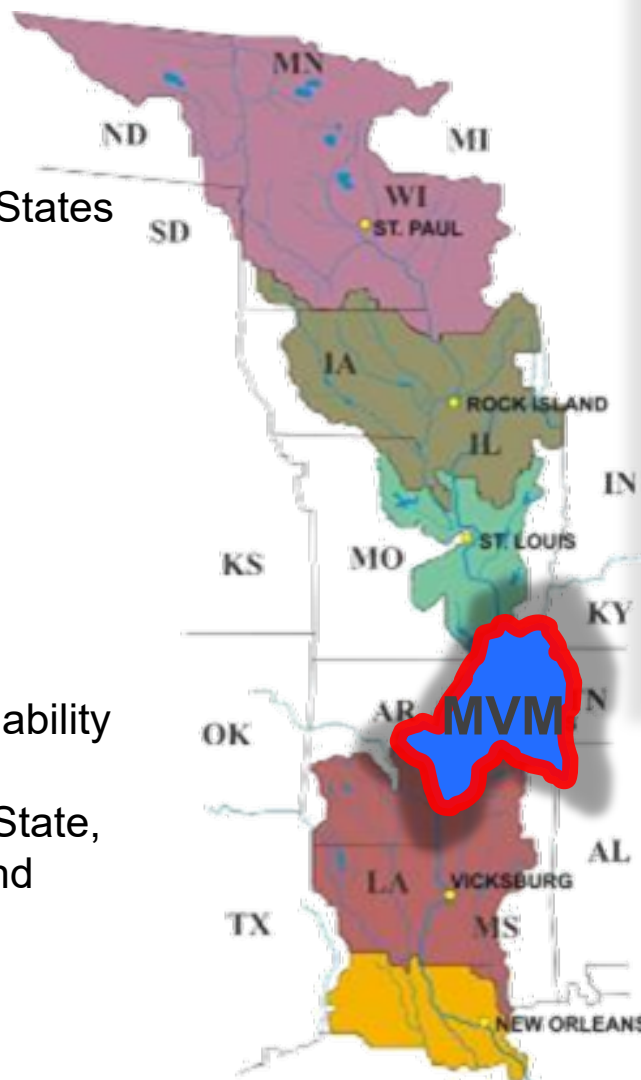


US Army Corps
of Engineers®



MEMPHIS DISTRICT

- District Boundary Includes Portions of Six States (TN, AR, MS, MO, KY, IL)
- 600 Miles of Navigation Channels
- Regional Channel Improvement Program Management
- 1000+ Miles of Federal Levees
- Designated MVD Center for Water Sustainability
- Valuable Partnerships with other Federal, State, and Local Governments; Multiple Levee and Drainage Districts, and non-Governmental Organizations





U.S. ARMY

WHERE WE OPERATE

4



WHERE WE OPERATE: ENSLEY ENGINEER YARD



- Established in 1949
- 127 acres located in Memphis Harbor
- One-Mile long Mooring Facility
- Machine Shop
- Carpentry Shop
- 3 x Floating Dry Docks
- Boat Repair

Approx. 200 Corps employees work at EEY

- Revetment Branch
- Physical Support Branch
- Navigation Branch
- Technical Support Branch



0 12.5 25 50 Miles



BUILDING STRONG®



WHERE WE OPERATE: PUMPING PLANTS



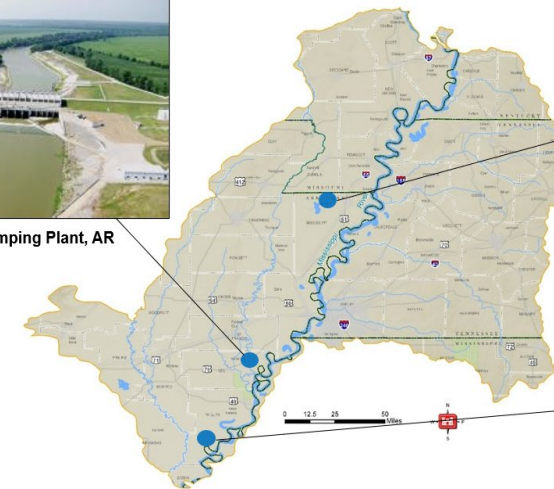
W.G. Huxtable Pumping Plant, AR



Drainage District 17 Pumping Station, AR



Graham Burke Pumping Station, AR



0 12.5 25 50 Miles



BUILDING STRONG®



WHERE WE OPERATE: AREA OFFICES



Wynne, AR Area Office



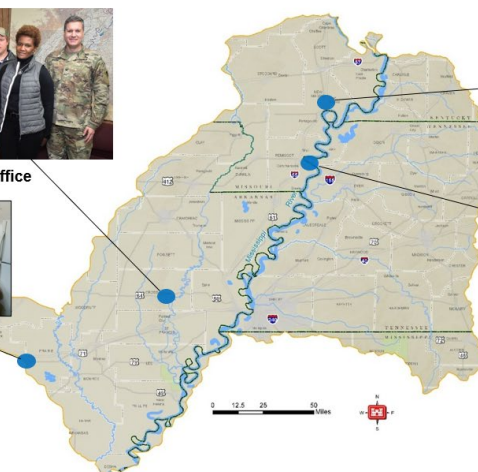
Confluence Project Office



Carlisle, AR Project Office



Caruthersville, MO Area Office



0 12.5 25 50 Miles



BUILDING STRONG®



U.S. ARMY

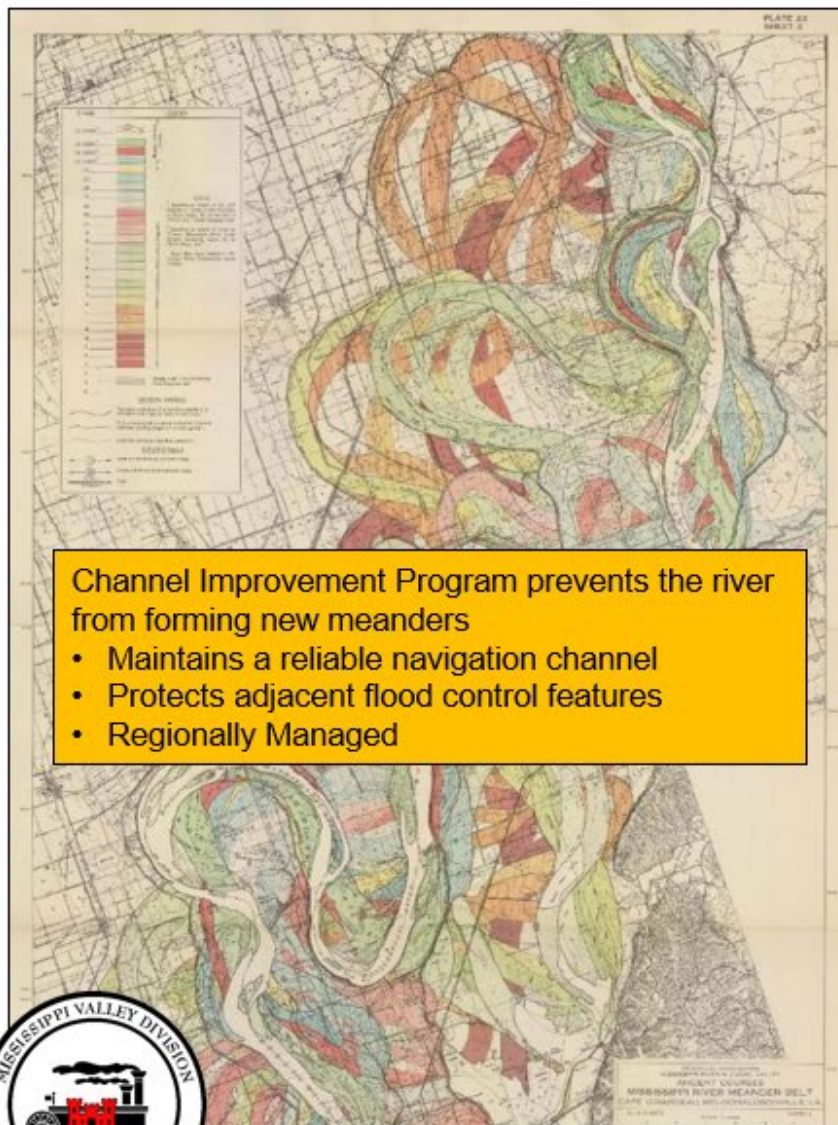


US Army Corps
of Engineers®



REGIONAL CHANNEL IMPROVEMENT PROGRAM

5



US Army Corps of Engineers
Memphis District

CONSTRUCTION & OPERATIONS

NAV		FRM	
Stone Dikes M K	Mat Casting M K N	Clearing & Snagging M	Bank Grading M
Dredging M K	Mat Loading M	Mat Sinking K	Upper Bank Paving M K N

BUILDING STRONG®

The Mississippi River & Tributaries (MR&T) project is a comprehensive flood control and navigation project.

<https://www.youtube.com/watch?v=T84MwpdggGg>



U.S. ARMY



UPCOMING OPPORTUNITIES



U.S. ARMY

ENSLEY ENGINEER YARD (EEY) STRINGOUT PROJECT



Project description:

Replace the eastern half of the Stringout, which includes:

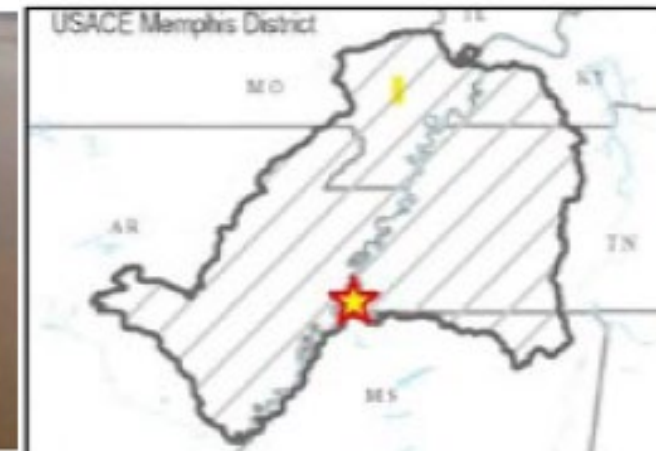
- **The demolition of an existing ramp and existing barges and pile clusters**
- **Construction of the eastern ramp, pile clusters, a GFE landing barge, and GFE Poseidon barges to replace existing material barges**
- **Dredging**
- **Electrical and mechanical systems will be required in the construction of the Stringout**

NAICS: 237990

Anticipated solicitation: Q3 FY25

Acquisition strategy: UNRESTRICTED

Magnitude: \$25M to \$100M





U.S. ARMY

8



AUTOMATED MAT CASTING FACILITY

Project description:

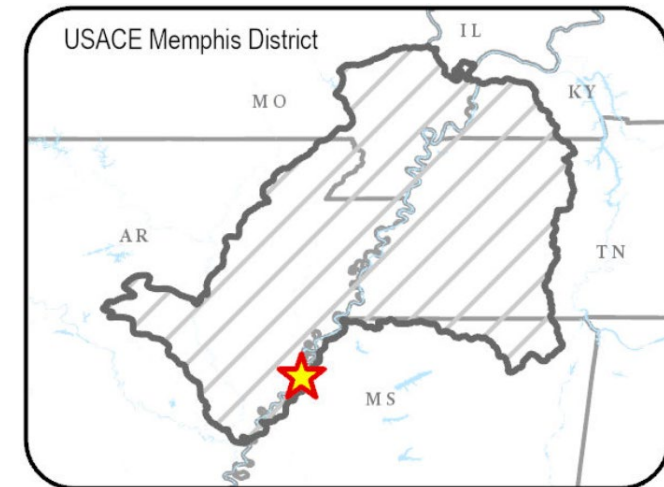
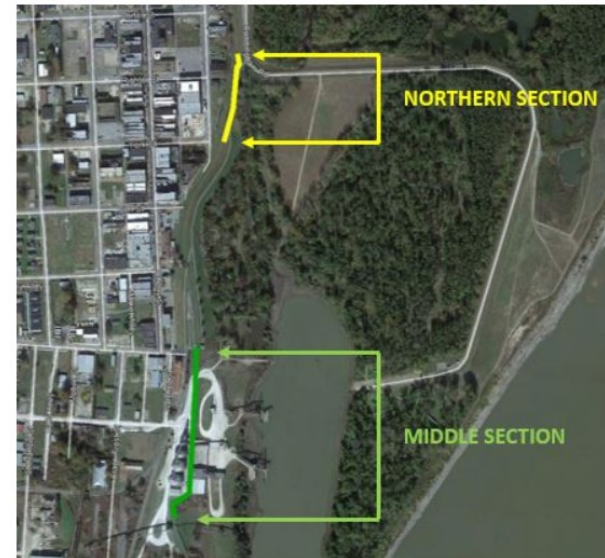
DESIGN-BUILD a semi-automated casting facility on the grounds of the existing government casting yard that can produce a minimum of 50,000 squares per calendar year, per shift, with the maximum capability of 150,000 squares annually with 3 shifts.

NAICS: TBD

Anticipated solicitation: Q3 FY25

Acquisition strategy: TBD

Magnitude: \$25M to \$100M





U.S. ARMY

BAYOU METO CANAL 1000 PHASE 3.2 (ENLARGEMENT)



Project description:

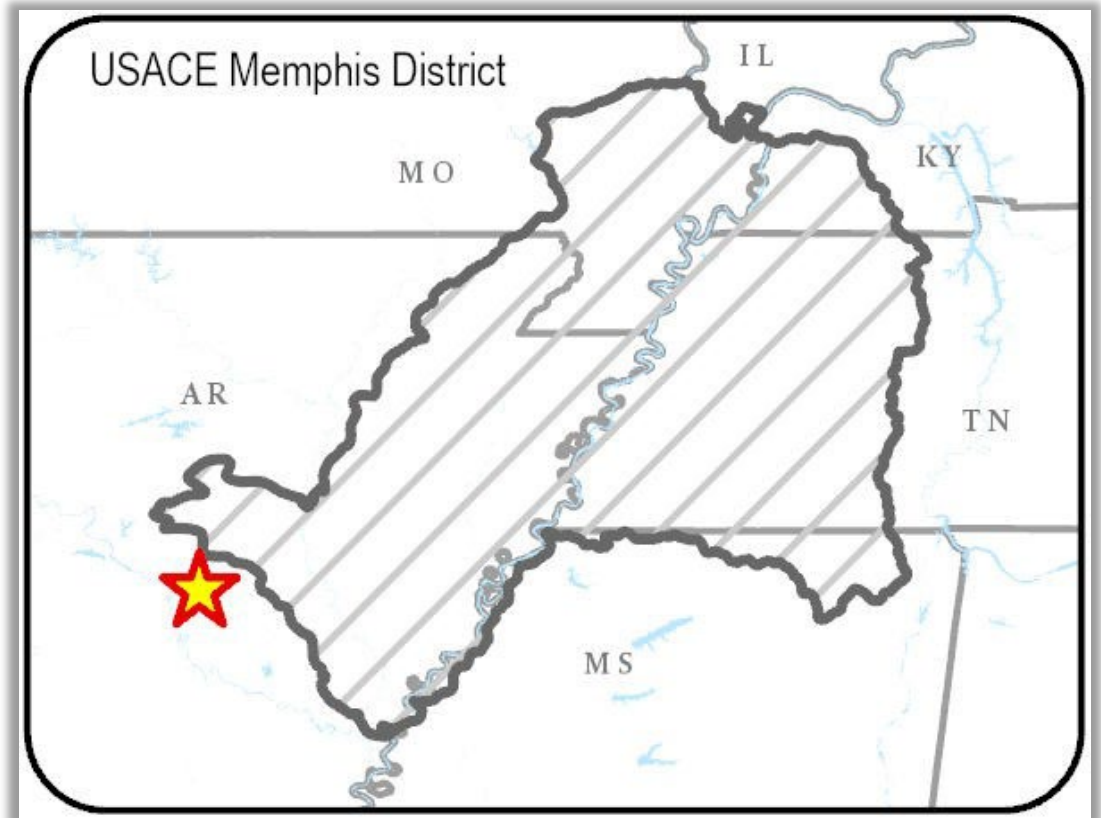
2.9 miles of canal construction and associated structures.

NAICS: 237990

Anticipated solicitation: Q2 FY25

Acquisition strategy: TBD

Magnitude: \$25M to \$100M





U.S. ARMY



GREENBELT LANDING

Project description:

- **Repairs to the existing boat ramp**
- **Construction of an additional new boat ramp upstream of the existing ramp**
- **Installation of deadman anchors along the top bank on the northern end of the park for boat mooring**
- **Modification of the existing parking lot for ADA compliance**
- **Additional lighting for security near the boat ramp(s)**

The site is located on the MS River in Shelby County, TN, at approximate River Mile 739L.

NAICS: 237990

Anticipated solicitation: Q3 FY25

Acquisition strategy: TBD

Magnitude: \$5M to \$10M





U.S. ARMY



HELENA FLOODWALL

Project description:

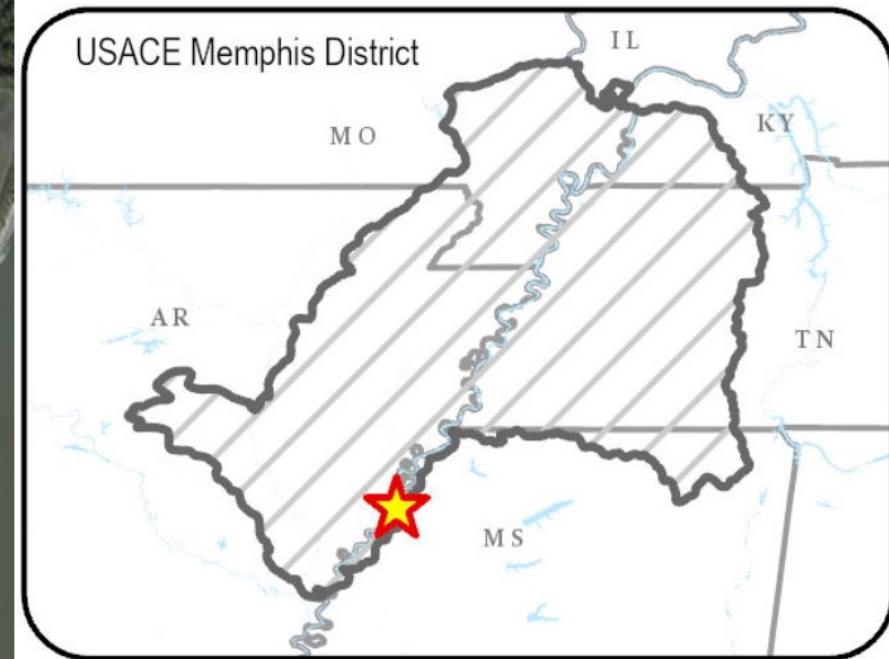
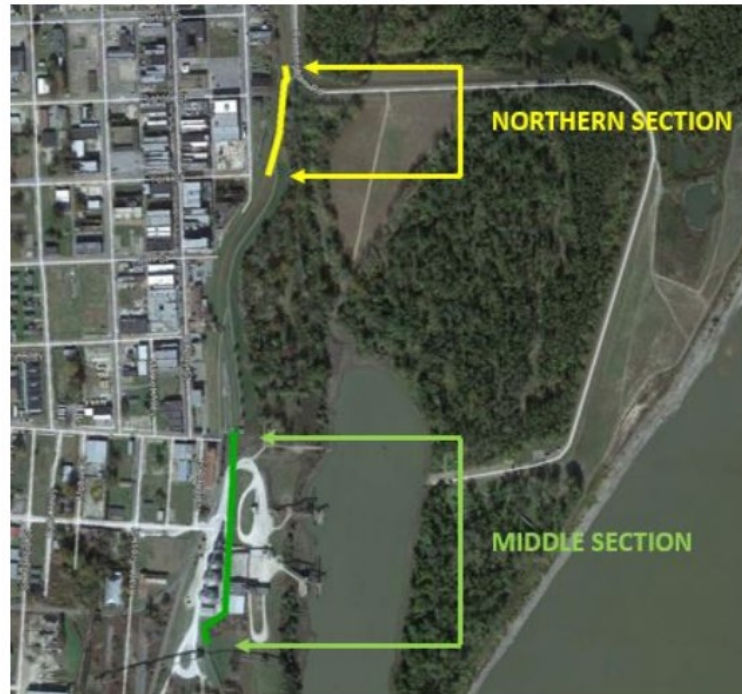
Replace approximately 1,600 LF of floodwall in downtown Helena, AR.

NAICS: 237990

Anticipated solicitation: Q3 FY25

Acquisition strategy: TBD

Magnitude: \$10M to \$25M





U.S. ARMY

FY25 SERVICES / SUPPLIES

12



- (3) welders/gougers
- (2) forklifts
- Rough terrain crane (above SAT)
- Marine surveyor services
- Air compressor system
- Roof replacement
- Parking lot repairs
- Electrical deck winches with controls
- Crane block
- (2) enclosed riding lawnmowers
- Generator load bank
- Powder coating system
- (3) UTVs
- Tractor shop lean-to



U.S. ARMY



**FIND YOUR NEXT
OPPORTUNITY**



U.S. ARMY

USACE MEMPHIS SMALL BUSINESS WEB PAGE ACCESS

14



<https://www.mvm.usace.army.mil/Business-With-Us/Small-Business/>

Business\

mil\Business-With-Us\Small-

https://www.mvm.usace.army.mil

Note- Save/bookmark this page and
check back quarterly for an updated
acquisition forecast





U.S. ARMY

15



USACE MEMPHIS SMALL BUSINESS PAGE

Welcome to the USACE Memphis District Office of Small Business Programs

Supporting Your Success in USACE Memphis Contracts

Acquisition Forecast!

Your journey to partner with the U.S. Army Corps of Engineers Memphis District (MVM) starts here.

Discover how MVM's Office of Small Business Programs can help your business grow while serving the nation's infrastructure needs.

USACE Small Business | FY25 Acquisition Forecast

NEW FY25 FORECAST NOW AVAILABLE!

[USACE Memphis FY25 Acquisition
Forecast \(Excel\)](#)

[USACE Memphis FY25 Acquisition Forecast \(PDF\)](#)

Small Business Events



Small Business Contact Info



Sherrie Cordi

U.S. Army Corps of Engineers Memphis District
Deputy, Office of Small Business Programs

Contact Information:

sherrie.cordi@usace.army.mil

Office: (901) 544-4520

Cell: (901) 568-0614 (call or text)

Items of Interest



U.S. ARMY

Search
SAM.gov by
W912* to see
most of
USACE's
opportunities

USACE DODAAC LIST

16



US Army Corps of Engineers - Contracting Office List	DoDAAC/Office Code
LRD - Great Lakes and Ohio River Division	
Buffalo District (LRB)	W912P4
Chicago District (LRC)	W912P6
Detroit District (LRE)	W911XK
Huntington District (LRH)	W91237
Louisville District (LRL)	W912QR
Nashville District (LRN)	W912P5
Pittsburgh District (LRP)	W911WN
MVD - Mississippi Valley Division	
Memphis District (MVM)	W912EQ
New Orleans District (MVN)	W912P8
Rock Island District (MVR)	W912EK
St. Louis District (MVS)	W912P9
St. Paul District (MVP)	W912ES
Vicksburg District (MVK)	W912EE
NAD - North Atlantic Division	
Baltimore District (NAB)	W912DR
Europe District (NAU)	W912GB
New England District (NAE)	W912WJ
New York District (NAN)	W912DS
Norfolk District (NAO)	W91236
Philadelphia District (NAP)	W912BU
SAD - South Atlantic Division	
Jacksonville District (SAJ)	W912EP
Mobile District (SAM)	W91278
Savannah District (SAS)	W912HN
Wilmington District (SAW)	W912PM
Charleston District (SAC)	W912HP
NWD - Northwestern Division	
Kansas City District (NWK)	W912DQ
Omaha District (NWO)	W9128F
Portland District (NWP)	W9127N
Seattle District (NWS)	W912DW
Walla Walla District (NWW)	W912EF
POD - Pacific Ocean Division	
Alaska District (POA)	W911KB
Far East District (POF)	W912UM
Honolulu District (POH)	W9128A

Japan District (POJ)	W912HV
SPD - South Pacific Division	
Albuquerque District (SPA)	W912PP
South Pacific Border (SPB)	W50UW8
Los Angeles District (SPL)	W912PL
Sacramento District (SPK)	W91238
San Francisco District (SPN)	W912P7
SWD - Southwestern Division	
Fort Worth District (SWF)	W9126G
Galveston District (SWG)	W912HY
Little Rock District (SWL)	W9127S
Tulsa District (SWT)	W912BV
TAD - Transatlantic Division	
Afghanistan Engineer District (TAA)	W5J9JE
Middle East District (TAM)	W912ER
CENTERS	
Army Geospatial Center (ACG)	W5J9CQ
USA Humphreys Engineering Support Activity (HEC)	W912HQ
USA Engineering and Support Center (HNC)	W912DY
Engineering Research and Development Centers (ERDC)	
- Vicksburg Consolidated Contracts Office (ERDC)	W912HZ
- Construction Engineering Research Lab (CERL)	W9132T
- Geospatial Research Lab	W9132V
- Cold Regions Research Engineering Lab (CRREL)	W913E5
- Joint Test and Evaluation Program (JT&E)	W91C9G



QUESTIONS?



Sherrie Cordi

Sherrie.cordi@usace.army.mil

(901) 568-0614 (call or text)